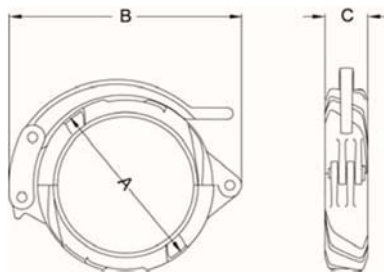


MODEL SD-28A SHOULDERED TOGGLE COUPLING

The **Shurjoint** Model SD-28A coupling is designed to connect shouldered-end pipe with Type A rings for services where frequent assembly and disassembly is desired or required. The housing segments are hinged with a lever handle for easy installation. The use of a split pin prevents accidental opening of the couplings. The housing segments are made of ductile iron to ASTM A536 Gr. 65-45-12 and or A395 Gr. 65-45-15 and are normally supplied in hot-dip galvanized. The standard rubber gasket is Grade T Nitrile.



Full warranty terms
can be found on
www.shurjoint.com

Model SD-28A Shouldered Toggle Coupling

Nominal Size	Pipe O.D.	Max. Working Pressure (CWP)*	Dimensions			Allowable Pipe End Separation (E)	Deflection Degrees	Weight
			A	B	C			
in	in	PSI	in	in	in	in		Lbs
mm	mm	Bar	mm	mm	mm	mm		Kgs
2	2.375	400	39.32	4.43	1.93	0.125	2° - 43'	2.8
50	60.3	28	86.5	112.5	49	3.2		1.3
3	3.500	400	4.96	6.46	1.93	0.125	1° - 53'	4.4
80	88.9	28	126.0	164.0	49	3.2		2.0
4	4.500	400	6.30	8.43	2.05	0.125	1° - 29'	6.6
100	114.3	28	160.0	214.0	52	3.2		3.0
165.1 mm	6.500	400	8.43	11.14	2.05	0.125	1° - 2'	6.5
	165.1	28	214.0	283.0	52	3.2		4.3
6	6.625	400	8.54	11.10	2.05	0.125	1° - 1'	9.9
150	168.3	28	217.0	282.0	52	3.2		4.5
8	8.625	400	10.95	14.17	2.36	0.125	0° - 47'	18.3
200	219.1	28	278.0	360.0	60	3.2		8.3

*Working pressure is based on standard wall carbon steel pipe.

MATERIAL SPECIFICATIONS

• Housing:

Ductile Iron to ASTM A536 Gr. 65-45-12 and or to ASTM A395, Gr. 65-45-15, min. tensile strength 65,000psi (448 MPa).

• Surface Finish:

Standard finish is hot dipped zinc galvanized.

- ☐ (Option) Black electro-deposition coated.
- ☐ (Option) Painted orange or RAL3000 red.
- ☐ (Option) Epoxy Coatings in RAL3000 red or other colors

• Rubber Gasket:

Grade “T” Nitrile (Color code: Orange stripe)

Recommended for petroleum products, air with oil vapors, vegetable and mineral oils within the specified temperature range. Also good for water services under +150°F (+66°C). Temperature range: -20°F to +180°F (-29°C to +82 °C).

Do not use for HOT WATER above +150°F (+66°C) or HOT DRY AIR above +140°F (+60°C).

For additional details contact **Shurjoint**.

• Locking Lever Handle:

Ductile Iron to ASTM A536 Gr. 65-45-12 and or to ASTM A395, Gr. 65-45-15, min. tensile strength 65,000psi (448 MPa).

• Toggle Links:

Plated carbon steel plate to ANSI C-1010 or C-1020

• Hinge Pin:

Casehardened carbon steel to ANSI C-1212.

• Rivet:

Carbon steel to AISI C-1010.

• Split Pin:

Carbon steel wire rod to ASTM A421.

General Notes:

- **Maximum Working Pressure (CWP)** listed is the maximum cold water pressure for general piping services tested to ASTM F1476 and or AWWA C606 methods. Figures listed are based on standard wall carbon steel pipe. For other pipe schedules or pipe materials, contact **Shurjoint** for additional information.
- **Field Joint Test:** For one time only the system may be tested hydrostatically at 1½ times the maximum working pressure listed (AWWA C606 5.2.3).
- **Warning:** Piping systems must always be depressurized and drained before attempting disassembly and or removal of any components.
- **The 10 Year Limited Warranty** applies to manufacturing defects only and does not cover severe service/temperature applications or wear parts.
- **Shurjoint** reserves the right to change specifications, designs and or standard without notice and without incurring any obligations.

Shurjoint product specifications in U.S. customary units and metric are approximate and are provided for reference only. For precise measurements, please contact **Shurjoint** Technical Service. **Shurjoint** reserves the right to change or modify product design, construction, specifications, or materials without prior notice and without incurring any obligations to make such changes and modifications on **Shurjoint** products previously subsequently sold.